

## Training Program on Safety

### 1. Occupational Health and Safety Training Before Starting Work

1.1 The company places great importance on occupational health, safety, and environmental laws, particularly the Occupational Safety, Health, and Environment Act B.E. 2554 (2011). The company provides safety training for all workers before they start work, change jobs, move to a new work location, or change machinery or equipment that may pose a risk to their life, body, mental health, or general well-being. In 2024, the company conducted occupational health and safety training for its employees and contractors under the course “Occupational Health and Safety Training Before Starting Work, Changing Jobs, Moving to a New Work Location, or Changing Machinery or Equipment,” with a total of 38,825 workers participating across various construction departments. The breakdown is as follows:

No.	Group Type	New Workers (people)	Trained (people)	Percentage (%)
1	Company Employees	8,997	8,997	100%
2	Contractors	29,828	29,828	100%



Safety and occupational health training for new workers within the construction unit

## 2. Training for Special Job Types

The company places great importance on accidents that may occur to workers involved in high-risk tasks. It has established a policy that all construction departments must prevent accidents from occurring to workers. The company has provided various training courses according to the nature of the work, as follows:

### 2.1 “Scaffolding Work and Working at Heights Training” Course

The company has conducted training for workers involved with scaffolding and working at heights, with a total of 454 participants, divided into various courses as follows:

No.	Course	Target Group	Number (Batches)	Number of Trainees (Persons)
1	Basic Scaffolding Installer (Level 1 Scaffold)	Basic Scaffolding Installers	13	297
2	Advanced Scaffolding Installer (Level 2 Scaffold)	Advanced Scaffolding Installers	1	12
3	Scaffolding Installation Supervisors and Inspectors	Foremen, Supervisors, Engineers, and Safety Officers	9	145



“Scaffolding Installation Supervisors and Inspectors Training” course

## 2.2 Course “Safety in Crane Operations”

The company has conducted training for workers involved with cranes, totaling 842 people, divided into the following courses:

No.	Course	Target Group	Number (Batches)	Number of Trainees (Persons)
1	Crane Operator, Signal man, Rigger, and Lifting Supervisor for stationary cranes such as overhead cranes, gantry cranes, or similar equipment	Foremen, Supervisors, Engineers, Signalmen, and Material Handlers	1	18
2	Lifting Supervisor, Signal man, and rigger	Foremen, Supervisors, Engineers, Signalmen, and Material Handlers	24	504
3	Re-training for Safety in Crane Operations	All workers who have completed training in the past 2 years	46	320

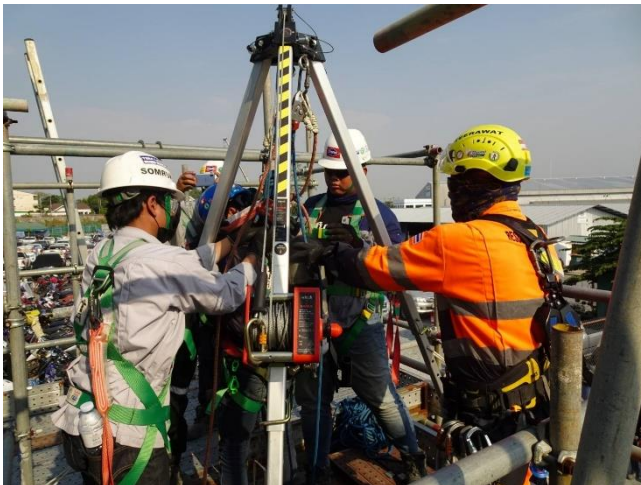


“Crane Operator, Signal man, Rigger and Lifting Supervisor Training” Course

### 2.3 Training Course on “Safety in Confined Space Work”

The company considers the safety of workers who must enter confined spaces, which pose risks such as suffocation, inhalation of toxic substances or chemicals, and other environmental hazards. Therefore, training sessions were conducted for a total of 474 workers involved in confined space work, divided into the following courses:

No.	Course	Target Group	Number (Batches)	Number of Trainees (Persons)
1	Authorized Personnel, Supervisors, Assistants, and Operators	Foremen, Supervisors, Engineers, Safety Officers, and Operators	19	463
2	Refresher Course on Confined Space Work	Operators in all positions who have completed training 5 years ago	5	11



“Safety in Confined Space Work Training” Course



### 3. Emergency Response Drill Training

The company places great importance on the Ministerial Regulation on Safety, Occupational Health, and Working Environment Management Standards for Fire Prevention and Suppression B.E. 2555 (2012). It has developed a fire prevention and suppression plan and conducts basic fire extinguishing training as well as annual fire evacuation drills at all construction sites, including both work areas and employee residential areas.



Fire Drill and Emergency Evacuation Training